

## TIMBER FLOORS

**Technical guide:  
designing floors for flood**

**ATFA convention wrap up**

**Floor of the Year awards**

## HURFORD ROASTED



Hurford Roasted is a new solid timber flooring product that has been heat-treated to alter the wood's molecular structure and colour for a more stable, beautiful board.

- The colour change penetrates the entire board with no need to restain in future
- A more stable and durable product than regular kiln-dried flooring
- Available in two distinctive tones: Cayenne and Peat
- Available in two popular grades: Prestige and Rustic
- Precision-milled to 128 x 14mm tongue and groove profile

hardwood.com.au  
phone 02 6621 9886



# Note from the CEO



Welcome to Timber Floors Magazine, issue 16. The first few months of 2011 have been a tough time by anyone's measure. Flooding in most states, with particular devastation in Queensland, was followed by fires in Western Australia and Cyclone Yasi in North Queensland. Then in February we witnessed our cousins in Christchurch experience a catastrophic earthquake. The full extent of

tragedy in Japan after the earthquake, tsunami and nuclear disaster there in March is still unfolding. On behalf of ATFA our thoughts are with all of those who met with disaster or have suffered the loss of a loved one in these events.

The flooding has generated considerable activity in the greater Brisbane area as Australia's third largest city rebuilds itself. ATFA has written important timber flooring inundation guidelines for both operators and consumers. Visit the ATFA website for the full info sheet on inundation and if there is any doubt regarding rectifications to a flood damaged property, please contact us.

On a positive note, and one that demonstrates that all the efforts of our industry are on the right track, recent data released by IBISWorld indicates that timber flooring has considerably increased its share of the floor finishing market (wholesale carpet, tiles, concrete, vinyl and timber). Timber flooring is now at 25% of the flooring market (shared with stone), up a considerable 8% in about five years.

February's ATFA Convention and Dinner in Sydney was an enormous success and declared the coming of age for our industry. Full coverage of this event starts on page eight. Enjoy this issue.

Randy Flierman, CEO

Australian Timber Flooring Association

## Staff and Contributors

### Editor and Art Director

Lucy Perry  
editor@atfa.com.au

### Contributing writers

Jane Lawrence, Dave Hayward  
Randy Flierman, Emma Watt,  
Christine Coates

### Advertising sales

Jane Lawrence  
phone 02 9440 9999 | fax 02 9440 9066  
jane@atfa.com.au

### Production - Pure Publishing

Graphic design - Amber Hooper  
Print management - Bruce Perry



### Publisher

Australian Timber Flooring Association  
11 Oleander Ave Shelly Beach QLD 4551  
ph 1300 361 693 | fax 1300 361 793  
atfa.com.au | ABN 16 524 524 226

*Timber Floors* is published four times a year by The Australian Timber Flooring Association.

*Timber Floors* may not be produced in whole or part without the written consent of the publisher. Views expressed within this publication are not necessarily the opinions of the editors or publisher. Whilst all efforts are made to ensure the accuracy and truthfulness of stories included in this issue, the writers, editors and publisher cannot be held responsible for inaccurate information supplied for publication. *Timber Floors* also holds no responsibility for any advertisements printed in this magazine that may be deemed inaccurate.

## this issue

ATFA update	2
Member profile: B+C Timber Flooring	5
The flooring market is hotting up: Hurford Roasted	6
Species info: Manna (Ribbon) Gum	7
ATFA Convention wrap up	8
ATFA Awards for Excellence	12
Floor of the Year awards	14
International trends in flooring	18
Your health profile: prostate cancer	20
Technical feature: flood damage and timber flooring	22
Tips from the trade, IR talk, calendar dates	24
Project feature: Awesome award-winning floor	28



Cover: Winner Floor of the Year, Commercial Site Installed, Awesome Timber Floors

# ATFA update

## The next convention

On the back of an enormously successful convention held in Sydney from 2-4 February, you should already be considering the next convention. While the Sydney event attracted 6600 trade visitors, on target with projections, the July 2012 convention in Melbourne promises a huge attendance of 15,000 trade visitors. It doesn't make sense to miss exhibiting or visiting this one! The most pleasing part of this year's event was the huge escalation in attendance by architects, builders, designers, specifiers and retailers, in addition to the many contractors who also circulated the exhibition hall. The ATFA International Seminar Series and the fantastic

demonstrations presented by our local and international instructors were a hit with visitors, drawing quite a crowd at each session. The ATFA Convention dinner and awards night was also a huge success, hosted by the charismatic Andrew Daddo who entertained us with his charm and wit, not to mention a few good travel tales! The 2011 sponsors have already put their hand up to sponsor their categories in 2012. However, there are a few sponsorship opportunities still available that weren't taken up this year and we recommend making contact quickly. These includes sponsors for Showroom of the Year, Sales Representative of the Year and Employee of the Year.

## More member benefits coming soon!

In the coming months, members will receive the ATFA Checklists manual. This will become the third hard copy ATFA guideline in print, joining the Timber Flooring manual and Problems and Causes manual. Our Checklists manual will include a suite of checklists for the common situations that timber flooring contractors encounter and will help contractors to develop a quality verification trail for all projects. It is anticipated that the checklists will also be available electronically to ATFA members. Also in production are guideline booklets for engineered flooring, bamboo and decking, with laminate flooring due later in the year. This set of booklets



**ECO-FRIENDLY**  
**WONDERFUL FLOOR**  
**RENEWABLE**  
AON: 107 906 374

Wonderful Floor specialises in pre-coated Australian solid hardwood, engineered floating hardwood and pre-coated bamboo floors.

Our products are environmentally friendly and have been sourced from sustainably managed forests.

**Wonderful Floor (Factory)**  
62-66 Vallance Street, St Marys NSW 2760  
Phone 02 9517 4742 Fax 02 9517 2436  
[www.wonderfulfloor.com.au](http://www.wonderfulfloor.com.au)

## **GALAXY MACHINES**

**buy direct from the importers**



Elite 3 edger

8" and 12" belt/drum combo sander

**parts • service • leasing available**

**Synteko Pty Ltd.**  
**Call: 02 9406 8100**

**[info@synteko.com.au](mailto:info@synteko.com.au) • [www.synteko.com.au](http://www.synteko.com.au)**  
**[www.galaxyfloorsanders.com.au](http://www.galaxyfloorsanders.com.au)**

will provide a fourth element to our collection of technical publications. Also headed your way in 2011 are new information sheets which should be added to your grey ATFA Information Guide. These include timber species, grading, inundation, ghosting, taber testing, concrete testing, underfloor heating and marketing information sheets. They will be printed later in the year but will be released electronically as they become available.

#### Coming events and training

Registrations are now open for all workshops in 2011, so mark your diaries now as they are extremely popular. The program kicks off with the New Techniques Program – Install and Finish in Perth on 13-15 April. This program will introduce flooring contractors to alternative techniques and specialist installation and finishing methods. The workshop program for the rest of 2011 includes

Advanced Timber Technology, Timber Grading, Coatings Essentials and Troubleshooting and will be held in various locations nationally. Also coming up is a program of ATFA forums. Get ready to participate in an Australian Timber Flooring Association forum in your state to share your opinions and knowledge. For further information on events, training and forums as well as registration details, visit the ATFA website at [atfa.com.au](http://atfa.com.au). **f**



The ATFA Member Accreditation model is being reworked with a draft supplied to members for comment soon. The new model will introduce new criteria for levels four and above as the requirement for peer group review and assessment. This introduces increased rigour to the accreditation system while maintaining relative ease in completing the documentation. The main intent is to provide a system that consumers can trust and rely upon.

# EMBELTON FLOORING

*Embelton Flooring manufactures and distributes a complete range of products and equipment for the flooring industry*

Victoria – Head Office  
147-149 Bakers Road, Coburg 3058  
Tel: (03) 9353 4811

Victoria  
1/72 Fenton Street, Huntingdale 3166  
Tel: (03) 9545 6499

New South Wales  
3/100-108 Asquith Street, Silverwater 2128  
Tel: (02) 9748 3188

Queensland  
44 Millway Street, Kedron 4031  
Tel: (07) 3359 7100

Western Australia  
37 Sundercombe Street, Osborne Park 6017  
Tel: (08) 9204 1300

ACN 004 251 861

**EMBELTON**  
FLOORING



- Parquetry
- Cork
- Solid Strip Timber Flooring
- Sound Insulation Matting
- Adhesives for Timber Installations
- Sanding Products
- Polyurethanes / Coatings
- Tools and Machinery
- Bamboo
- Laminate Flooring
- Engineered Floors

[www.embelton.com](http://www.embelton.com)



**“ATFA MEMBERSHIP GIVES  
OUR CUSTOMERS AN  
ASSURANCE OF UTMOST  
PROFICIENCY AND  
PROFESSIONALISM. ATFA  
MEMBERSHIP REINFORCES  
OUR CREDIBILITY.”**

**John + Joseph Elasi  
Floormania**

# JOIN ATFA

## **AND GAIN THE FOLLOWING PROFESSIONAL BENEFITS...**

- Receive Timber Floors Magazine quarterly as well as electronic bulletins issued every six weeks, keeping you informed of news and events within the industry.
- Have access to hotlines manned by industry experts to assist with advice on the spot.
- Have access to an active and committed industry-led board allowing you the opportunity to have your say.
- Increase your capability and market presence with the ATFA accreditation scheme.
- Grow your business with the ATFA marketing machine: stickers, use of the ATFA logo, 'find a member' website, plus foundation membership for lifetime recognition.
- Benefit from ongoing technical and industry research as well as a range of training opportunities to continue improvement for the industry.
- Be involved in the national annual convention including exhibition, conference, live demonstrations and annual awards night.

**ph 1300 361 693**

**fax 1300 361 793**

**e [admin@atfa.com.au](mailto:admin@atfa.com.au)**

**w [www.atfa.com.au](http://www.atfa.com.au)**

# **atfa**®

**Australian timber flooring association**

# Member Profile:

## B+C Timber Flooring

**Husband and wife team, Brad and Chandelle Marston of B+C Timber Flooring in Western Australia were thrilled to win Contractor of the Year at the 2011 ATFA awards!**

Brad and Chandelle have been in the building industry for 23 years. The business prides itself in providing their customers with a "personal, painless service," supplying floors that are laid and finished with meticulous detail.

Brad and Chandelle's partnership in the business is a key to their success.

"Brad looks after the onsite works, which includes material deliveries, slab rectification and preparation, moisture barriers, flooring and stair installations, sanding, coating, beading and timber decks as well as overseeing staff and contractors," says Chandelle. "Custom made inlays, curved work and machining is also all done in-house at our machine shop. As Brad is a carpenter-joiner by trade, if it can be done in timber, we can do it!"

Chandelle looks after the customers, organising quotations, ordering stock, managing client contracts, scheduling jobs and looking after accounts and wages.

In addition to Brad and Chandelle, the staff consists of five installers plus two sanders and they have always trained and put through new timber flooring apprentices.

Their showroom in Jandakot was opened in 2007. Since its opening, B+C has continued to enjoy business growth. They attribute much of their success to the complete service they offer. "We are a one stop shop," says Chandelle. "We offer slab rectification, moisture barriers, installation, sanding and coating. Most of our work is high-end residential and we find that our clients prefer to deal with one company. Brad is also a flooring inspector and he is meticulous about quality of workmanship."

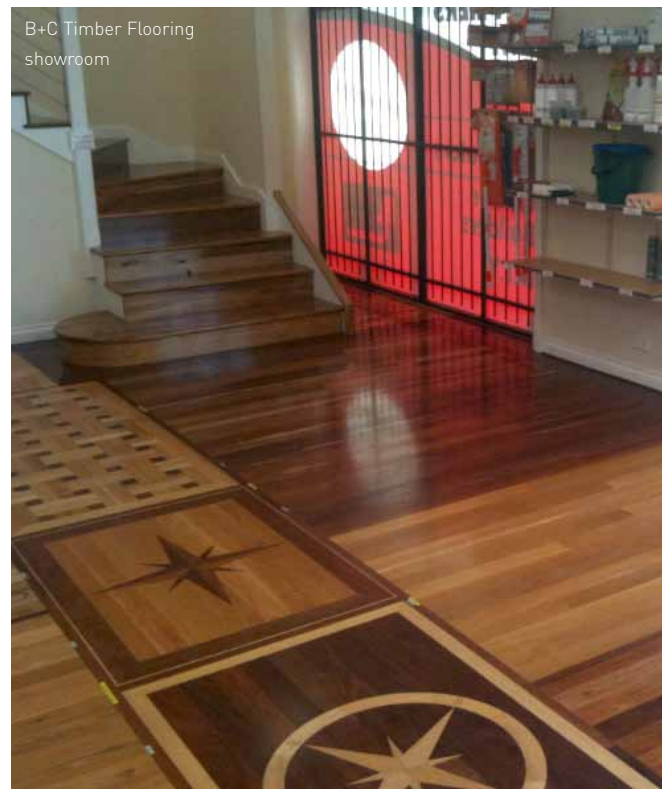
From the moment a customer contacts B+C or walks into the showroom, they are given all relevant information

and advice regarding their flooring needs. "This enables the customer to make an informed decision, not a forced decision," explains Chandelle.

**All clients have access to ATFA consumer guidelines and they can take with them the smaller brochures on products and ATFA information."**

Over the last year the business has purchased two concrete grinding machines, a multitude of diamond discs and blocks along with extraction equipment, for dust-free rectification of concrete slabs.

"We have big plans for growth," says Chandelle. *f*



**FREE**

**Super 7 Edger worth \$3146**

See page 9 for details

**Clarke  
American Sanders**

# The flooring market is hotting up

**It's not often that a completely new timber innovation hits the market but that's what we're looking at with Hurford Hardwood's new Roasted flooring product.**

This revolutionary solid hardwood timber flooring product is treated using ultra-high temperatures to change the molecular structure of the timber. This produces an extremely stable, highly durable and dense board.

At the same time as restructuring the cellulose fibres of the species, the high temperature darkens the timber to a beautiful deep colour. This colour change is permanent and penetrates the entire board, eliminating the need to stain floors in the future.

The Hurford Roasted process is carried out in a purpose-built kiln in which the temperature can be raised up to 230°C. The colour of the wood fibre changes dramatically as the ultra-high temperature is introduced.

"The higher the temperature, the darker the colour change to the fibre," says National Marketing Manager, Malcolm Johnston.

**The Hurford Roasted process increases the stability of flooring significantly as it reduces the normal shrinkage and swelling that traditional kiln dried hardwood can experience.**

"Board movement is reduced by up to 50%," says Malcolm. "This makes Hurford Roasted ideal for domestic and commercial flooring."

David Nash from Nash Timbers has specified Hurford Roasted for clients coming into his showroom initially looking for a timber they could stain. "The beauty of this product is that the colour goes all the way through the timber so when it is resanded the colour stays exactly the same," says David. "We've also found it to be extremely stable, which we discovered recently when we laid it in an apartment right on Bondi Beach where it was exposed to intense moisture."

The process creates a timber that is three to four times more durable than the same species unroasted, without having to apply chemical treatments. The use of water and heat rather than chemicals means the Hurford Roasted process is more environmentally responsible than chemical treatments.

The Roasted range is offered in two colours: Roasted Peat (a beautiful, rich, deep brown) and Roasted Cayenne (a dark, rich, reddish bronze).

Hurford's Roasted is precision-milled to a tongue and groove profile, which is 14mm thick (with a 5.5mm wear layer) and is manufactured in a popular wide board of 128mm. It is available in two grades: Prestige for light to medium features and Rustic for moderate to heavy natural characteristics. The resource used is AFS Chain of Custody Certified.

For more information on Hurford Roasted contact Hurford Hardwood on 02 6621 9886 or visit [hardwood.com.au](http://hardwood.com.au). **f**



Pictured here, Hurford Roasted Peat  
Photography by Malcolm Johnston

# Species info: Manna (Ribbon) Gum

Manna Gum, also known as Ribbon Gum or Viminalis is a 50 metre tall Australian eucalypt growing in the cooler areas of Australia. It is found from the Mount Lofty Ranges in South Australia through Tasmania and Victoria to all the tableland districts of New South Wales

The Manna Gum tree is named after the sweet red gum which oozes from the leaves and damaged bark. In early times the gum was eaten by Aboriginal Australians. The other common name for this species, Ribbon Gum, comes from the long ribbon-like deciduous strips of bark that hang from the trunk.

There are three subspecies of the Manna Gum, including the viminalis, cygnetensis and pryoriana. Each subspecies can be found in different parts of Australia: Victoria, Tasmania, and regions in South Australia.

The heartwood is pale pink or pale pinkish brown while the sapwood is not visually distinct. Manna Gum timber flooring is generally pale pink to pinkish brown in colour, often with distinctive light grey streaks. It has a medium and even texture and variable grain, with prominent growth rings.

This species is relatively easy to work and it glues well. It accepts most coatings and oils well. When nailed near the ends of boards it may need pre-drilling to avoid splitting.

As well as timber flooring, Manna Gum is commonly used for internal joinery, furniture, panelling and handles. It also has potential for plywood manufacture. **f**



## Physical properties of Manna Gum

Botanical name	Eucalyptus viminalis
Family	Myrtaceae
Dry density	750 kg/m <sup>2</sup>
Janka (hardness)	6



Images courtesy Boral Timber

**FREE**

**Super 7 Edger worth \$3146**

See page 9 for details

**Clarke  
American Sanders**

# ATFA Convention wrap up

The 2011 Flooring and Finishes with ATFA trade exhibition and convention was a massive success! Co-locating the exhibition with Decoration + Design and the Australian Furniture Fair was a very good move, attracting huge numbers of designers, architects and decorators to the show.

There were over 6,600 trade visitors, and with the Flooring and Finishing exhibition positioned between two very well attended and long-established trade shows, the timber flooring sector attracted an excellent crowd.

"Never before have we seen so many architects and designers attending a timber flooring exhibition in Australia!" says Tony Kellman from Synteko. "We're used to seeing contractors coming in to see new product innovations, but this year's show also had creatives looking for product inspiration and samples." *f*



## TIMBER FLOORS MAGAZINE BEST EXHIBITOR AWARDS 2011

The inaugural Timber Floors Magazine Best Exhibitor Awards were chosen by editor and art director Lucy Perry and advertising sales director Jane Lawrence.

Highly commended went to **Hurford Hardwood**: a well designed stand, hosting a product launch cocktail party. This attracted people

to the stand to stay for a chat about the new Hurford Roasted product.

Another highly commended award went to **Selleys**: their idea was to offer free coffee on their stand. Another good way to give people a reason to stick around for a chat.

Second prize went to: **Deck-Max**. The guys were demonstrating their

new product installation to a good size crowd non-stop.

The overall winner was a stand that was well very designed. Their product range is right on trend and the marketing material is top notch. The winner of the Timber Floors Magazine Best Exhibitor Award for 2011 is **FLOORWOOD!**

Danielle and Dean Marshall from Floorwood put a huge amount of work into the design of their stand which featured hand cut Balinese doors and the company's antique range of hand made solid parquetry panels produced from reclaimed, salvaged and recycled Oak and Teak. Visit [floorwood.com.au](http://floorwood.com.au) for details.

HIGH COMMENDED: HURFORD HARDWOOD



SECOND PRIZE: DECK-MAX



HIGHLY COMMENDED: SELLEYS



AND THE WINNER OF TIMBER FLOORS MAGAZINE BEST EXHIBITOR AWARD 2011: FLOORWOOD



# Clarke American Sanders

Because REAL PROS deserve REAL TOOLS

# FREE

SUPER 7 EDGER  
**WORTH \$3146\***  
WITH EVERY  
FLOORCRAFTER  
PURCHASED



\*Based on RRP inc GST



## FLOORCRAFTER Belt Sander

### FEATURES & BENEFITS

4hp motor - up to 36kg drum pressure  
**More aggressive cutting**

Close edge sanding of only 3/4"  
**Spend less time edging**

Unique Dolly Transport System/van transport base  
**Transports easily, protects your investment and provides a superior result on the floor**

Patented "Split" rear castor wheel  
**Provides smooth transition from forward to reverse**

Valid until 30 April 2011 or while stocks last. Some conditions may apply

Call us today



# 1300 556 710

# Demonstrations and presentations a huge success



The free demonstrations program as part of the exhibition was very well attended by flooring contractors, many of whom had travelled interstate for the event. Demos included board bending techniques, board placement and medallion inserts.

The presentations were extremely popular with some sessions having standing room only!

Daniel Boone (USA) spoke on preparation, planning and job management skills, as well as the vital decisions that lead to a perfect installation. Christine Coates (also from the USA) presented on international flooring trends. Phil Holgate spoke on the chemical nature of surface coatings, their life expectancy, toxicity, VOC and carbon footprint while David Hayward, ATFA Technical Manager, examined the factors that influence floor performance.

Summaries of all presentations are available on the ATFA website at [atfa.com.au](http://atfa.com.au).

**All of your indoor and outdoor flooring needs covered**

Gunns Timber Products stocks a large range of Strip, Overlay, Parquetry and Sports Floors available in Jarrah, Tas Oak, Vic Ash, Myrtle and Blackwood, all backed by Chain of Custody certification. Jarrah and Treated Pine Decking products are also available. Visit [www.gunnstimmer.com.au](http://www.gunnstimmer.com.au) P 1800 088 135 F 1800 337 104

Gunns  
TIMBER  
PRODUCTS

Good Wood

Architect: Maria Gigney Architects  
Photographer: Matthew Newton

# Timber flooring people know how to party!

The annual ATFA awards dinner (sponsored by Embelton Flooring) held at the end of the three-day exhibition in Sydney was a fantastic night: great venue on the harbour, fabulous food, good company and excellent entertainment. All those who received an award earned an on-stage bear hug from ATFA president Paul Kiely and a handshake from MC, well-known media personality, Andrew Daddo.

The annual dinner represents an opportunity for timber flooring industry professionals from all over Australia to get together. With the exhibition and conference being such a success, the atmosphere was one of celebration! *f*



## hyseries

### hybridge

**Waterborne Hybrid Floor Primer**

Hy-Bridge is a new hybrid primer for floors using the emerging science of nanotechnology to create a unique inter coat bond.

**The difference:**  
A waterborne nano particle aliphatic urethane for multi surface applications - timber, indoor concrete floors, terrazzo, pre-sealed slate and unglazed quarry tiles in commercial buildings.

Designed as an intermediate floor sealer and as a basecoat for rejuvenating worn and porous floors.

### hytraffic

**Waterborne Hybrid Timber Floor Finish**

**Natural beauty in two illuminating finishes**

**The difference:**  
A premium high gloss and matte finish for domestic and commercial feature timber floors.

**Consider the Advantages:**

- Superior resistance to scuffing, scratching, spillage and damage.
- Maximum edurance in heavy traffic conditions.
- No hazardous solvents that pose a risk to users.
- Easily maintained using simple washing and dust mopping procedures.

### hyprime

**Waterborne Hybrid Timber Floor Primer**

**A single approach to preparing floors for a better looking finish**

**The difference:**  
Formulated for freshly sanded timber floors, effectively minimizing the occurrence of edge bonding and for deep sealing of porous floors prior to the application of Hy-Series finishes.

www.peerlessjal.com.au - Call 1800 800 248

**PEERLESS JAL**  
Keeping it Clean since 1947

# ATFA Awards for Excellence

**Apprentice of the Year sponsored by Oakdale Industries**

**Lee Hollis, Precision Timber Floors**

According to Lee's employer Alexis Broughton, Lee has been an important part of Precision Timber Floors since he began back in August 2008. Lee completed his trade certificate in record time – six months early! "I truly believe he is one in a million as an apprentice!" says Alexis.



Winner Lee Hollis (right) pictured here with John Hollis (no relation) from Oakdale

**Employee of the Year sponsored by The Australian Timber Flooring Assoc**  
**Josh Marques, Marques Flooring**

Josh has been with Marques Flooring for four years, during which time his employer witnessed passion, commitment, reliability, attention to detail and loyalty. His enthusiasm and professionalism with customers and staff has been part of the success of Marques Flooring.



Josh Marques (right) with ATFA president, Paul Keily

**Sales Rep of the Year sponsored by The Australian Timber Flooring Assoc**  
**Stuart Brown, Portugal Cork Company**

Stuart's employer, Frank Ryan, says that Stuart has been a valued employee for Portugal Cork in Queensland for over a decade. "Stuart's honesty, integrity and reliability shine through, as well as his incredible work ethic. Nothing is too hard for him and he has earned loyal customers."



Stuart Brown (right) with ATFA president, Paul Keily

**Quality Timber Flooring.  
Professional Advice.  
Perfect Results.**

Oakdale Industries is a leading manufacturer and supplier of competitively priced, high-quality Tongue & Groove strip, overlay & parquet flooring.

Enhance your next project with a selection of some of the world's strongest and most beautiful timbers.

Oakdale Industries stocks Tasmanian Oak; Celery Top Pine; Myrtle; Sassafras, Huon Pine, Jarrah, Spotted Gum and Radiata Pine. Many other species are available from suppliers worldwide.

**Oakdale Industries**

PROUDLY PART OF **OAK TASMANIA**

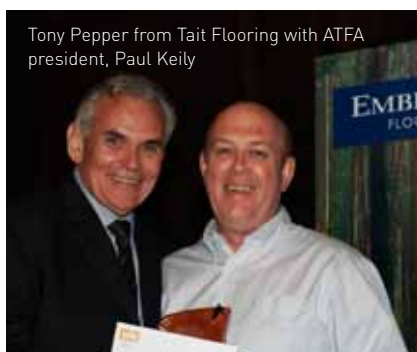
The provision of employment assistance services to people with disabilities is funded by the Australian Government under the Disability Employment Assistance Program.



Oakdale Industries - 4C Bounty Street Warrane TAS 7018 Ph: (03) 6244 2277 Email: oakdale@oak.org.au Web: www.oakdaleindustries.com.au

**Showroom of the Year sponsored by  
The Australian Timber Flooring Assoc  
Tait Flooring**

The Tait Flooring showroom in Melbourne is an inspiring centre for timber flooring with over 1200m<sup>2</sup> of flooring on display, including a huge species range and a variety of finishes. Tait's "room" size flooring panels offer a comprehensive look at a species, grade and finish for each floor.



Tony Pepper from Tait Flooring with ATFA president, Paul Keily

**Distributor of the Year sponsored by  
Selleys Australia  
Marques Flooring**

Marques Flooring, now a level 7 Vanguard member of ATFA, has been a pioneer in the industry for many years. Specialist management and staff, a fully-stocked warehouse and a modern showroom ensure that timber flooring customers receive the service and information they deserve.



Up on the podium again, Josh Marques with Saxon Robinson from Selleys

**Contractor of the Year sponsored by  
Lagler Australia  
B+C Timber Flooring**

B+C Timber Flooring is one of Perth's leading timber flooring businesses (see page 5 for full story), supplying and installing top quality timber flooring. In addition to beautiful timber floors B+C Timber Flooring also specialises in stunning timber staircases.



Brad and Chandelle from B+C with Cameron Luke from Lagler

*"You would be smiling too  
if you were standing next  
to such beauty!"*

*Cameron Luke, Lagler Australia*

**1800 880 888**  
**www.lagler.com.au**



# Floor of the Year awards sponsored by Boral Timber



The annual ATFA Floor of the Year Awards are given in recognition of photographic entries received by ATFA for outstanding timber flooring projects installed throughout the year. The awards were determined by online voting where every ATFA member had the opportunity to lodge one vote per category. This year saw a record number and outstanding quality of entries, accompanied by enthusiastic voting which

reflected the high level of workmanship undertaken. The awards were announced at the ATFA annual dinner.

"The Floor of the Year Awards is such a great event for the timber flooring industry," says Steve Dadd from Boral Timber who attended the ATFA Awards dinner and spoke on the night. "It recognises creativity in design and use of species, expert workmanship in installation and perfection in finishing.

## Residential – Site Installed

**EQUAL WINNER!**



**Northern Suburbs  
Timber Flooring**

**EQUAL WINNER!**



**Queensland  
Timber Flooring**

**BORALTIMBER**  
Build something great™

# Boral Silkwood

## engineered hardwood flooring

**Build something great™ with BoralTimber**

Boral Silkwood is a prefinished engineered hardwood flooring product that needs no acclimatisation. Just open the box and start laying. It can be glued down or floated directly on a concrete slab, plywood, tiles or existing timber flooring.

Boral Silkwood can be installed and walked on within a matter of hours - no down time for sanding, finishing or curing, a lot less mess and fewer fumes. Lay it right at the end of the project to ensure that it's a perfect floor at hand-over.

For installation guides, product samples or a list of Boral Silkwood resellers, phone 1800 818 317 or visit [www.boraltimberflooring.com.au](http://www.boraltimberflooring.com.au)



# Residential – Prefinished

**WINNER!**



**Market Timbers**

“These projects demonstrate the high level of master craftsmanship as well as business acumen that goes into completing projects of such high quality and of this scale. They are all spectacular uses of timber and all entrants should be very proud of their work.

“All of us here at Boral Timber congratulate this year’s winners, runners up and all entrants in the Floor of the Year awards. We are proud to sponsor such a world-class event.” says Steve.

“This is the first time that ATFA has employed an online voting system for the Floor of the Year awards,” says Randy Flierman, ATFA CEO. “This meant that we could restrict members to one vote each for a fair result.”

“Winning equal first place for our residential site installed floor was great!” says Robert Clague of Northern Suburbs Timber Flooring. “The award represents recognition for our workmanship on a national level and is good for the whole team here at Northern Suburbs Timber Flooring.” *f*

**RUNNER UP**



**Queensland Timber Flooring**



**Era Polymers**

Excellence in Polyurethane Chemistry

## Eracoat RAPID MDI Gloss

**Era Polymers** are proud to launch **Eracoat RAPID**

- Quick turnaround from start to finish
- Cut your job time in half
- Recoat in 2 - 4 hours
- Walk on in 1 hour
- High solids
- Less inconvenience for your customers
- Durable
- No Lingering Odours
- High Abrasion Resistance
- Good gloss finish

Easy to Use

For enquiries or to find your local stockist please contact **Craig Kennedy** on **0412 183 375**

25-27 Green Street, Banksmeadow, NSW 2019, Australia | P +61 2 9666 3788 | F +61 2 9666 4805 | [www.era-pol.com.au](http://www.era-pol.com.au)

# Commercial – Site Installed

**WINNER!** See page 28 for feature story on this floor



**Awesome Floors**

**RUNNER UP**



**Cork and Parquetry Specialists**

## *Whittle Waxes*

*The Australian experts in ecologically harmonised finishes for naturally beautiful timber*



**whittle**  
WAXES

Give us a call for a brochure pack on

**1300 326 929**

[www.whittlewaxes.com.au](http://www.whittlewaxes.com.au)

# International trends in timber flooring

Over recent years the choice of timber flooring types and finishes has grown significantly. While Australian species are the most beautiful in the world, we cannot escape the influence of the US, Europe and Asia when it comes to design.

According to Christine Coates from Coates and Associates in the United States, some of the emerging trends overseas including wider-width boards and longer-length boards, which have recently taken off in Australia.

Treatments such as heat, ammonia and impregnation are also becoming popular as well as fuming and

smoking, according to Christine.

Heat treating timber for a deeper colour and more stable structure is a process that is beginning to be adopted in Australia, as seen with products such as Hurford Roasted.

**According to Christine, wire brushing and hand scraping are popular techniques, used in Europe and the US, to create interesting textures and an aged appearance.**



Christine attended Flooring and Finishes with ATFA in Sydney during February and spoke to a packed room on international timber flooring trends.



## Australia's High Performance Water Based Floor Stain

- Low odour
- Achieve an even finish
- Create custom colours and shades
- Excellent coverage
- Low VOCs

Intergrain Enviropro Envirostain™ is a versatile stain that adds rich colour to timber floors. When top coated with the Intergrain Enviropro Endure™ range of timber finishes Envirostain becomes part of a high performance water based system.

For further information please call 1800 248 780 or visit [www.intergrainenviropro.com.au](http://www.intergrainenviropro.com.au)



Live edge is an interesting technique used overseas, where the timber is cut across the natural curve of the wood with each board fitting neatly together in a curved fashion.

Another emerging trend according to Christine is to digitally create grain, where the features of a particular species are imprinted over the existing timber. The only downside is that when the floor is sanded these embellishments disappear.

The use of finishes including urethanes, hard wax, oils, metallic and ceruse are widely used in Europe and are being adopted in Australia. As more decorative floor finishes become fashionable in Europe and the US, so these finishes have become available in Australia.

For example, lime washing has been very popular in the US for decades and is now on trend in Australia with products such as Intergrain Enviropro's Envirostain Liming White becoming available as an integrated part of the Enviropro finishing system.

Environmental considerations are significant world-wide, with eco trends, certifications and green building schemes being a focus of the industry. At the same time, governments, consumers, architects and designers demand green credentials as part of a flooring product's appeal. For this reason, reclaimed timber has become very popular as old beams, thick floorboards and cladding are remilled into tongue and groove flooring profiles. **f**



# Strong Highland Character



Discover the original character and excellent durability of AST Golden Oak.

Golden Oak pure wood flooring is unlike any other because it is skilfully crafted by combining specially selected Australian hardwoods into unique, country style colour tones of golden yellow, husk brown and cream accented by distinctive wide grain patterns.

AST Golden Oak captures the spirit of a highland landscape with layers of harmonious colour and hardwearing character machined with precision into high quality tongue & groove solid floor designs.

Australian Solar Timbers is committed to environmental sustainability by using all natural and renewable resources.



Phone 02 6562 6839 Fax 02 6562 8302 [www.astfloors.com.au](http://www.astfloors.com.au)

# Your health profile:

## Prostate cancer - are you at risk?

Last year alone, almost 20,000 new cases of prostate cancer were diagnosed in Australia with more than 3,300 men dying from the disease. Prostate cancer is the most common cancer diagnosed in Australian men (excluding non-melanoma skin cancer), yet few people know what it is, if it has symptoms, or even if they are at risk.

With these facts in mind, it has never been more important for men to learn about this all-too-common disease, and to speak with a doctor about prostate cancer.

In the early stages, when prostate cancer is often treatable and curable, there are few symptoms. Yet, because men don't experience symptoms, many are not diagnosed in these vital, early stages. This is why talking to your doctor regularly about prostate cancer is so important.

As prostate cancer develops, symptoms can include the need to urinate frequently, particularly at night; sudden urges to urinate; difficulty in starting urine flow; a slow, interrupted

flow and dribbling afterwards; pain during urination; or blood in the urine or semen.

It is important to note that these symptoms are not always signs of prostate cancer. They can also be symptoms of other common and non-life-threatening prostate disorders. Men who experience these symptoms should see their doctor immediately to determine the cause and best treatment.

There is currently no population-based screening for prostate cancer and this leads to confusion among men and their doctors. There are issues related to testing and treatment which should be discussed prior to making a decision whether to be tested or not.

A man has a one in five risk of developing prostate cancer by the age of 85. A man with a brother or father who has been diagnosed with prostate cancer has at least twice the risk. Men in rural and regional Australia have a 21 per cent higher prostate cancer mortality rate than men in capital cities.

**Protect new  
timber flooring and  
save on expensive  
call backs**

## FLOOR LINER

- Vapour transmitting, shock absorbent sheeting
- Can be placed over freshly laid, lacquered or oiled timber floorings or subfloors within 72 hours
- Save on expensive repairs and retouching to new timber floors, which can be damaged by other trades
- No-slip, reusable, no fixing required



For free samples contact  
EMP Industrial Australia

Ph 03 9500 1819  
Fax 03 9500 1883

[info@empind.com.au](mailto:info@empind.com.au)

## LISA ALEXIOU

### Marketing Co-ordinator

ATFA's new Marketing Co-ordinator Lisa Alexiou joined the team in 2011, just in time to be thrown in at the deep end with the annual ATFA convention. The exhibition and awards dinner was the perfect way to introduce Lisa to some of the key players in the timber flooring industry, including suppliers and contractors.

Lisa's career has spanned the advertising, finance, not-for-profit, tourism and insurance industries, and she has freelanced as a Marketing Consultant here and overseas.

Lisa has picked up a working knowledge of the timber flooring industry over the past twenty years by osmosis from her husband, a former wood technologist with the former NSW Forestry Commission.

Lisa's main aim at the Australian Timber Flooring Association is to form stronger working relationships with members. She is also committed to growing the membership base across multiple industry sectors.

Two of the main risk factors for prostate cancer are age, and family history.

Men aged 50 years and over should speak with their doctor about prostate cancer every year, and if necessary be tested. However, if there is a family history of the disease, men should speak with their doctor annually from the age of 40 onwards, and if necessary be tested.

It's a simple step that really can save lives. If you would like more information about prostate cancer, talk with your doctor or contact the Prostate Cancer Foundation of Australia (PCFA) by phoning toll free 1800 22 00 99, or visit the website at [prostate.org.au](http://prostate.org.au)

PCFA is the peak national body for prostate cancer in Australia. It is leading the fight against this all-too-common disease by raising awareness, supporting those affected by prostate cancer and funding world-class Australian research. *f*



If you have ideas for how ATFA can improve your membership and in turn your business, please contact Lisa directly by emailing [lisa@atfa.com.au](mailto:lisa@atfa.com.au)

**BORAL PLYWOOD**  
Build something great™



## UNDERPLY



- Provides a stable substrate that will not delaminate, buckle or bow a hardwood tongue and groove strip floor
- Manufactured in a T+G profile for use over bearers and joists or square edged for use over concrete
- Manufactured to F14 stress grade so it is less likely to develop substrate interaction noise when walked on, compared to lower grade products
- Marine bond is heat, cold and water proof
- UnderPly is rated at E<sub>0</sub> for formaldehyde emissions (the lowest rating possible) and will not release formaldehyde under normal service conditions
- 40 year warranty on lamination
- Economical to use
- Available with H2 GlueTreat technology that is warranted for 15 years against termite attack
- Boral RV4 is the recommended underlay for installations
- Australian made

For more information phone  
free call **1800 773 596**  
email [plywood@boral.com.au](mailto:plywood@boral.com.au)  
visit [www.boralplywood.com.au](http://www.boralplywood.com.au)



BCC 05490 12.10

# Technical feature

## flood damage and timber flooring

Countless solid and engineered timber floors have experienced very wet conditions during the recent flooding throughout Queensland, New South Wales and Victoria. Detailed here is the story of one floor that survived the Brisbane flood of 2011 and will go on to provide many more years of service. So how was this solid timber floor able to survive the floods? David Hayward, ATFA Technical Manager provides insight on how this hardwood timber sports floor held up.

The floor illustrated below is in a basketball stadium in a Brisbane suburb that borders the Brisbane River. The building was inundated with nearly three metres of water and remained under water for about 36 hours. When the waters

subsided, the mud and silt remained, as shown below right. What a mess! The floor was cleaned thoroughly and after a few weeks, with the aid of fans to assist in drying, only moderate cupping remained, as shown on page 23.

In following weeks, the cupping decreased further, to the point where the floor could be rough sanded to remove the coating and aid in further drying. The process to restore the floor has been systematic, giving the subfloor space time to dry. The moisture content of the floor has also had plenty of time to re-establish near to estimated pre-flood values. This process was continuing at the time of writing.

The sports floor was made from high density Queensland Spotted Gum and was originally installed in 1984.



## Why is Australian-made Timbermate winning so many awards in America?

### Timbermate Woodfiller...

- Never shrinks, sinks, cracks or falls out
- Is 4 products in 1 - Wood Putty, Grain Filler, Crack Filler & Edge Filler
- No latex. No acrylic. No solvent.
- No waste - use to the last drop
- Takes any stain evenly

### Simple



### Others...

- Shrink, sink, crack or fall out
- Have limited uses and short shelf life
- Contain latex, acrylic or solvent
- Dry out in the tub - very costly
- Won't mix with all tints or stains
- Don't take stains evenly

*Timbermate -  
So good you'll never  
know it's there*



**Timbermate**®group

[www.timbermate.com.au](http://www.timbermate.com.au)

Toll Free: 1 800 354 811 (Except Mobiles)

Melbourne: (03) 9873 4811 Sydney: (02) 9983 9906

The boards were 85mm wide by 25mm thick and top nailed into hardwood floor joists. The floor was installed over a ventilated, enclosed subfloor space.

So what attributes contributed to the floor's performance under such extreme conditions?

**Firstly, the design of the floor is robust in nature. Boards that are 25mm thick rather than 19mm have been specified here then top nailed to hardwood joists.**

According to ATFA's publication Timber Flooring, this is a very robust system with board thickness and fixing being two important aspects to a floor's stability. A floor that is fixed directly to joists, although not always considered



ideal for sports floors, has, in this case, allowed the floor to dry from both sides.

One final important consideration is the species used for the floor. High density species do not absorb water quickly. Even when inundated for 36 hours, the rise in moisture content was only moderate and not sufficient to cause a high degree of expansion. Therefore, the floor has a good chance of survival if the fixing is strong, a high density species has been specified and the installation method allows drying from both sides of the floor.

The installation principles described here not only apply to river-flooded floors. They are also relevant to cyclone-prone areas and associated storm surges, which could also experience inundation or severe wetting of a floor, for a similar relatively short period of time. In such locations there is a need to consider the robustness of the flooring system that will be installed. **f**

**Don't Take Risks!**  
**Avoid Expensive Problems!**

**TEST FIRST!**

quickly and easily with a TRAMEX Moisture Meter.

Check timber, concrete, any material instantly. No probing, no drilling - absolutely no surface damage and no waiting for results.

**The meters pay for themselves within days.**

Contact us now for details of our range of reliable moisture meters and hygrometers for relative humidity testing.



**TRAMEX**

**Moisture testing Equipment for the Flooring and Restoration industries.**

**For more information and specification sheets contact**

**Tel: 02 9418 1002**

Fax: 02 9498 8576

Email: sales@cornell.com.au

# Tips from the trade

## REPAIRING DAMAGED BOARDS IN ENGINEERED FLOORS

With engineered timber flooring becoming so popular, the call for repairing damaged boards in floors is becoming more frequent. The common method of removing a floorboard and replacing it by gluing or nailing a new board to the subfloor can't be done with most engineered floors installed with a floating floor method as this will destroy the tongue and groove locking system. Here is my method for repairing these engineered floors. First drill a pilot hole to roughly 3-5mm deep in the damaged floorboard. Then, using a set of vernier callipers, measure the thickness of the hardwood veneer. Set a router to half the depth of your hardwood veneer (I often find it easier to do this in two passes). Set up a rail to cut up to about 1mm from the edge of the damaged board. Then slowly rout out the damaged hardwood veneer, starting in your pilot hole and being very careful not to cut into the core of the board. Using a chisel take out the 1mm piece around the perimeter. Take the replacement board (ideally a board left over from the installation) and run it through a thicknesser until all that is left is the hardwood veneer. Then use a two-part epoxy to glue the hardwood veneer back onto the substrate, carefully using a timber block to tap it down into place. This is time consuming and tedious work so when charging for repairs like this don't sell yourself short!

Josh Triplett, Timber Flooring Group, Victoria

*Thanks Josh. You'll be receiving an Attix 30 for your contribution.*



### GLASSES FOR THE TIMBER FANATIC

Look good and do good at the same time with this sustainable timber eye wear range from Proof. Their One for One style is a unique folding pair of sunglasses and for every sale, Proof gives another pair to an eye clinic in India where patients often don't have proper eye protection after surgery. The company has a recycling program so that sunglasses that have run their useful life can be sent back to Proof for recycling into wood shavings for animal bedding or fuel beads for heating homes. Visit [iwantproof.com](http://iwantproof.com) for details.

## WRITE TO US AT TIMBER FLOORS MAGAZINE AND BE REWARDED!

We'd like our readers to provide the content for this page with tips from the trade, learned from the front lines of the timber flooring industry. Write us a letter and the published letter judged as the best contribution will win an

**Attix 30 dust extractor from Nilfisk-Alto valued at \$1230!** Send your tips to [editor@atfa.com.au](mailto:editor@atfa.com.au) or fax 02 9440 9066.

### Add the Attix 30 dust extractor to your kit

- Easy handling and maintenance
- Compact, ergonomic and powerful
- 30L container volume
- Auto on/off for electrical power tool
- Big and practical tool deposit
- Multifit accessory system for the ultimate in task flexibility
- Featuring Xtreme Clean

A fully automatic filter cleaning system takes care of filter cleaning every 30 seconds without interrupting your work.

## ATTIX 30 VALUED AT \$1230



**Nilfisk  
ALTO**  
Why Compromise

**Clarke  
American Sanders**

# ATFA calendar

## **New techniques: install and finish program**

Perth 13-15 April

## **T+G Timber Flooring Forum**

Gold Coast 3 May

## **Troubleshooting Workshop**

Brisbane 10 May

## **Queensland Golf day**

Carindale 13 May

## **Coatings Essentials Workshop**

Sydney 17 May

## **Timber Grading Workshop**

Melbourne 19 May

## **Timber Flooring for Builders**

Brisbane 25 May

## ir talk with Emma Watt

### KEEP COMPANY INFORMATION CONFIDENTIAL

Many employers worry about the potential damage an employee could cause to their business via access to confidential information and relationships with the clients. In order to protect the business, confidentiality and restraint of trade clauses could be included in an employee's written contract. These clauses can protect goodwill and confidential information that is worth protecting such as 'trade secrets', not just an employee's 'know how', which is the general knowledge and skills gained during the course of employment. Employees are usually free to use 'know how', but can be contractually restrained from using or disclosing 'trade secrets'.

A well drafted clause should impose confidentiality on the employee and define what

information is to be protected. Confidential information cannot be anything that is public knowledge or in the public domain. It is generally information protected within a business by limited access to the information and clear identification of the information as confidential.

Restraint clauses are often qualified by reference to geographical area and time. This is to recognise that a restraint of trade clause will only be enforced to the extent that it was reasonable to protect the employer's legitimate interests. Restraining an employee from working for a competitor of the employer for an unlimited time and geographical area will generally be unreasonable in protecting the employer's interests and thus be unenforceable.

Emma Watt specialises in advising small to medium sized businesses in the timber and furnishing industries. She offers ATFA members two free telephone calls per annum for help on IR/HR issues.

Phone 03 8822 3712 Mobile 0411 708 073 Email [emma@emmawatt.com.au](mailto:emma@emmawatt.com.au)

## websites

### **broadcastbuilder.com.au**

This free professional development tool is ideal for licensed builders or other trades within the residential building industry such as timber flooring contractors. Earn CPD points too.



### **redcross.org.au**

Make a donation to help Queenslanders get back on their feet after the floods. Other natural disasters have taken over the public consciousness since then but don't forget the Queenslanders!



# Product snap shots

## GUNNS OFFERS POINT OF SALE

Point of sale items are becoming more popular within the timber products industry. A brochure can be used as an initiator for conversation or a standing proud banner can be used to show off a very proud floor layer's finished project. All of these items, brochures, banners, samples, are designed to help the end user make decisions and similarly, help the sales person to make the sale. Gunns Timber Products (GTP) has recently released a point of sale range to help support their stockists in providing both timely and accurate information to the end user. To discuss how GTP can help your business with point of sale, phone Nicole Lewis on 08 8721 5504 or email Nicole at [nicole.lewis@gunns.com.au](mailto:nicole.lewis@gunns.com.au)



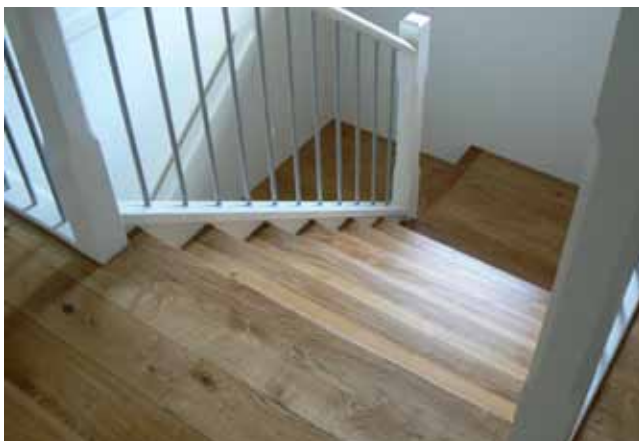
## NEW GENERATION SANDING BELT

Hermes Abrasives has announced the introduction of a new generation Aluminium Oxide Cloth Belt. This new product (RB346MX) introduces a new blend of superior grain to improve the performance and life of the conventional abrasive belt. RB346MX has a blend of aluminium oxide and ceramic grain. Ceramic grain is a new generation of cutting material to be introduced in Australia. It provides a longer cutting action whilst at the same time offering the perfect finish required and is available in grades P24 – 120#. For further information call 1800 335 473.



## LAGLER'S OXFORD OAK ENGINEERED FLOORING

Lagler's Oxford Oak is one of the most stable engineered timber floors available in Australia. The 14mm board has eight layers of cross sectioned hardwood birch, with a 4mm wear layer, while the 20mm board has ten layers of cross sectioned hardwood birch veneer with a 6mm wear layer. And yes, they are wide boards. With prices starting at around \$57 per square metre, guaranteed high stability and with minimal flat sanding required, this represents excellent long term value. Visit [lagler.com.au](http://lagler.com.au) for details.



## INTERGRAIN ENVIROPRO ENVIROSTAIN LIMING WHITE

Intergrain Enviropro's Envirostain Liming White is a high performance, low odour, environmentally responsible, water-based liming white stain that delivers a milky white tone to timber floors. Liming timber floors has now been made easier with the introduction of this product. Envirostain Liming White is revolutionary in product development as it has been specially formulated to be mixed into an Intergrain Enviropro Endure top coat with no need to wipe off, making application a breeze. When top coated with the Intergrain Enviropro Endure

range of timber flooring finishes, Envirostain

Liming White becomes part of a high performance water-based system. Visit [intergrainenviropro.com.au](http://intergrainenviropro.com.au) or call 1800 248 780 for further information on this product.





# Walk safe with Bona

## Bona Traffic Anti Slip

When you are coating a floor, are you sure the finish meets the required slip resistance standard?

With the increased focus on slip resistance levels in public areas AS/NZ Standard 4586 requires finishes to be R10 rated when used on staircases, ramps and in food courts, cafes, foyers or any area where spillage might occur.

Bona Traffic is the world's biggest selling waterborne 2-pack used on more than 100 million m<sup>2</sup> of commercial and high traffic domestic floors. Traffic Anti Slip combines the proven performance of Bona Traffic together with anti slip properties to meet the R10 standard for slip resistance.



More information at  
[www.bona.net.au](http://www.bona.net.au)

**Bona**<sup>®</sup>

# Project feature: Awesome award-winning floor

The winner of the 2011 ATFA Floor of the Year, Commercial-Site Installed was Awesome Timber Floors for this striking new floor in Leighton Holdings' headquarters in Fortitude Valley, Queensland.

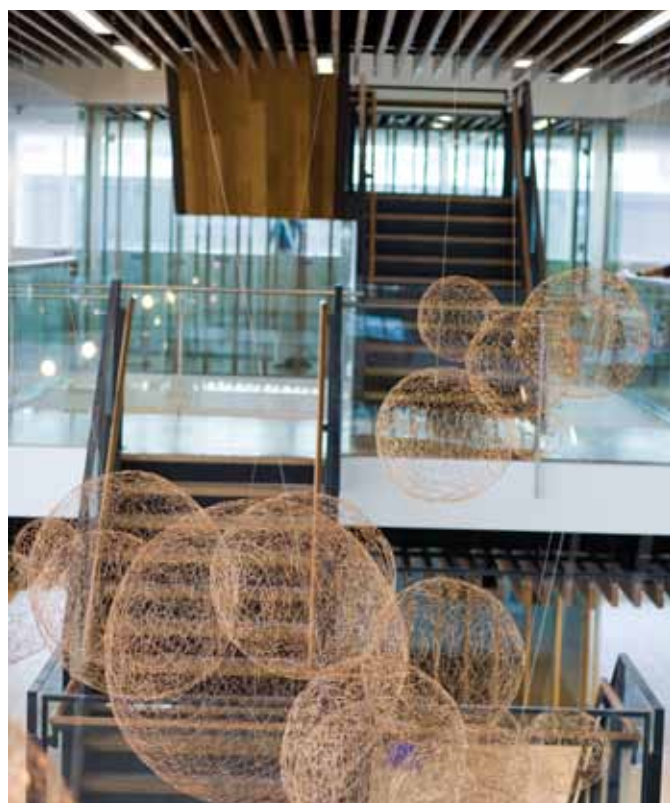
The project showcases contemporary and sustainable urban design, providing approximately 38,500 square metres of A grade office space in two towers.

Awesome Timber Floors supplied, installed, sanded and polished the timber flooring on this project.

"The timber specified was recycled Blackbutt 120 x 14mm which was supplied by Australian Architectural Hardwoods. The adhesive specified was Selleys Direct Stick system.

"The project was substantial, consisting of 1400 square metres of flooring, as well as poles, lift overruns and stairs," says Daniel Jones from Awesome Timber Floors. "In total there were about 20 separate areas completed."

The project was not without its obstacles "The direct stick installation using recycled Blackbutt created a number of challenges," says Daniel. "It had to be perfect. The installation process was fairly time-consuming and being on a big site environment it was also very interesting trying to control the areas while applying the coatings." *f*



Images courtesy Selleys

# CONGRATULATIONS



to Daniel Jones and the crew  
at **AWESOME TIMBER FLOORS**  
on winning the  
**ATFA Floor of the Year award**

## **SELLEYS TECHNICAL ENQUIRIES**

Australia 1 300 555 205

New Zealand 0800 735 539

[www.selleystrade.com.au](http://www.selleystrade.com.au)



# Meet **WOODWISE**®



**Wood Patch**



**Full-Trowel Filler**



**Powdered Filler**



**Epoxy Wood Patch**



**Pre-Finish Filler**



**No Shrink Patch-Quick**

*Because you deserve a choice!*

Discover why we're  
America's favorite  
wood filler!

*Wood flooring experts  
like you deserve a  
choice. Check out our  
line of quality wood  
fillers and choose  
which one is right for  
YOUR next job!*

*WOODWISE also carries  
a diverse line of tools, accessories  
and maintenance products for the  
hardwood floor industry. Visit us  
online and find out what you've been  
missing!*

[www.woodwise.com](http://www.woodwise.com)



Design Hardwood Products, Inc.  
Redmond, Washington USA

Distributed by:



**Boral Timber**

19 Summit Rd. Noble Park, VIC 3174  
Ph: (03) 9790 1790